

DIN valves and accessories

Model 62426 Spherical sight glass for welding - 316L stainless steel



Specifications

Dimensions: DN25 to DN100

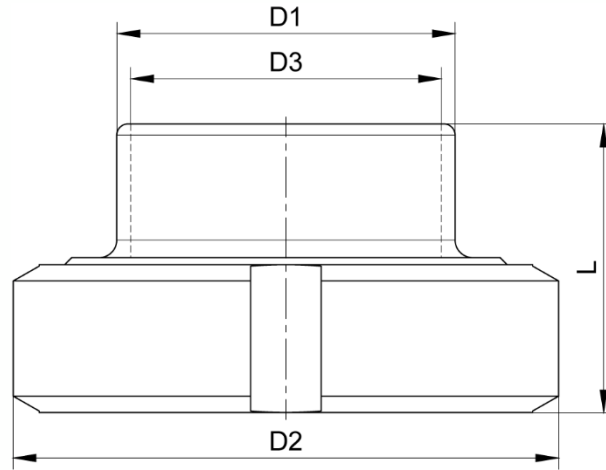
Connection: to be welded

Max. pressure. : 10 bar

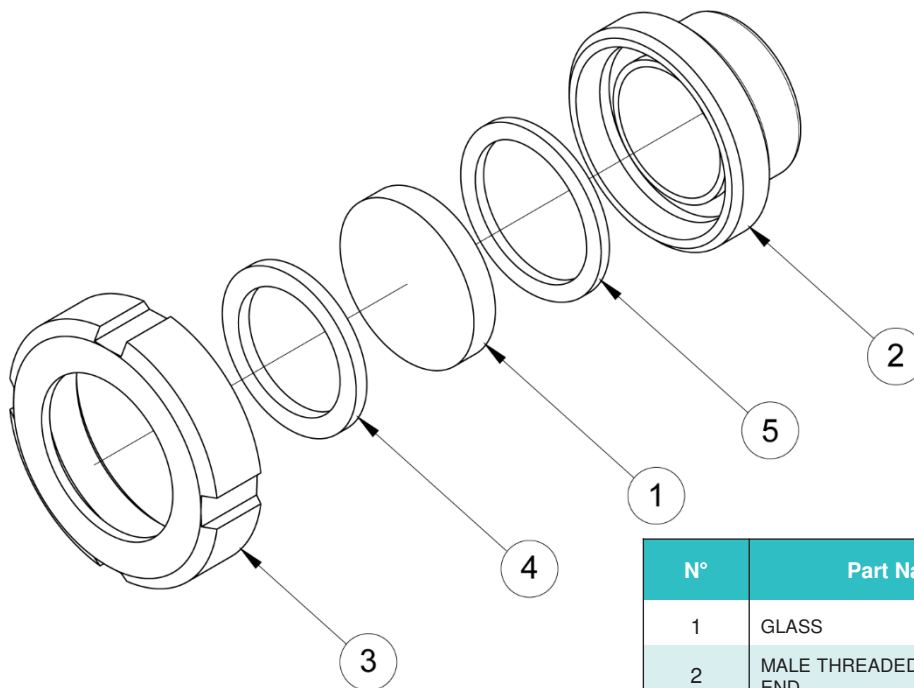
Operating temperature: -10°C to +100°C

Material: 316L stainless steel - NBR gaskets

On request: EPDM or FKM gaskets.



DN (mm)	D1 (mm)	D2 (mm)	D3 (mm)	L (mm)	DIN threading (nut and end)	Weight (kg)	Part number
25	35	63	26	38	52x1/6"	0.35	662426-25
32	41	70	32	42	58x1/6"	0.45	662426-32
40	48	78	38	42	65x1/6"	0.55	662426-40
50	61	92	50	44	78x1/6"	0.75	662426-50
65	79	112	66	52	95x1/6"	1.15	662426-65
80	93	127	81	57	110x1/4"	1.60	662426-80
100	114	148	98	66	130x1/4"	2.90	662426-100



N°	Part Name	Material
1	GLASS	PYREX®
2	MALE THREADED AND PLAIN END	AISI 316L
3	CLAMPING SCREW	AISI 304
4	SUPPORT RING	PTFE
5	GASKET	NBR/EPDM/FKM*

*NBR gasket as standard (EPDM or FKM on request)

Béné Inox – 11 chemin de la Pierre Blanche – 69800 SAINT-PRIEST – S.A.S with 240 000 € share capital – SIREN N° 311 810 287
Tel. N°: +33 (0)4 78 90 48 22 – Fax N°: +33 (0)4 78 90 69 59 – www.bene-inox.com – bene@bene-inox.com

Technical information, illustrations and photographs are provided for information only, they are not contractual. Some may vary according to the tolerances accepted in the profession and the applicable standards. All instructions for use, disassembly and maintenance are recommendations only. These could also vary depending on product usage conditions, its installation environment and purchaser requirements – of which the purchaser alone is responsible for their definition.

Assembly and maintenance instructions

Installation

You can install the spherical sight glass in any position. However, check that all fluids can flow through it freely.

Check that there is enough space to carry out maintenance operations where you are planning to install the spherical sight glass.

How to install a spherical sight glass:

Welding must be carried out by qualified personnel.

You must disassemble the spherical sight glass to avoid damaging its gasket and glass during welding. Reassemble the spherical sight glass after welding.

Clean the installation and check that the equipment is clean and free from foreign bodies that could damage the spherical sight glass.

Pressure test the installation according to the applicable standards (e.g. EN 12266-1), without exceeding the specifications of the spherical sight glass.

Maintenance

A spherical sight glass does not require any specific maintenance if it is used in normal operating conditions.

You may need to change some of the spherical sight glass's parts due to unusual wear and tear, or if a fluid has damaged it and caused a leak or malfunction.

If this is the case see the "Assembly / Disassembly" section below.

Assembly / Disassembly

The maintenance and removal/installation of the spherical sight glass must be carried out by personnel who are qualified and trained for this type of intervention.



Warning: Before you work on the spherical sight glass, check that the installation has been stopped and that the piping is empty and is not pressurised.

Warning: If the spherical sight glass is used with fluids that have a temperature above 60°C then people could burn themselves if they touch it.

Warning: Beware of hazardous materials - follow the instructions provided by the suppliers.

Unscrew the clamping screw **3**.
Remove the support ring **4**, the glass **1** and the gasket **5**.

Clean and inspect all of the parts of the spherical sight glass. Replace any worn parts. You are strongly advised to replace the sealing gasket that has been disassembled.

Follow the disassembly steps in reverse to reassemble the spherical sight glass.

Spherical sight glass accessories

Here is a list of all of our spherical sight glass accessories, as well as a table that shows the corresponding accessory part numbers for each DN.

- Model **62427**: PTFE ring for a spherical sight glass (part **4**)
- Model **62428**: Replacement Pyrex® glass (part **1**)
- Model **62394**: NBR half ring gasket (part **5**)
- Model **62397**: EPDM half ring gasket (part **5**)
- Model **62395**: FKM half ring gasket with BNIC certification (part **5**)

DN (mm)	Part number PTFE ring	Part number Pyrex® glass	Part number NBR gasket	Part number EPDM gasket	Part number FKM gasket
25	962427-25	962428-25	962394-25	962397-25	962395-25
32	962427-32	962428-32	962394-32	962397-32	962395-32
40	962427-40	962428-40	962394-40	962397-40	962395-40
50	962427-50	962428-50	962394-50	962397-50	962395-50
65	962427-65	962428-65	962394-65	962397-65	962395-65
80	962427-80	962428-80	962394-80	962397-80	962395-80
100	962427-100	962428-100	962394-100	962397-100	962395-100

Standards and compliance

- This spherical sight glass complies with European Pressure Equipment Directive (PED) 2014/68/EU Article 4 paragraph 3 (formerly 97/23/EC Article 3 paragraph 3).
- This spherical sight glass complies with EC Directive 1935/2004.