

DIN valves and accessories

Model 62430 Double flat sight glass on a cross 316L stainless steel



Specifications

Dimensions: DN25 to DN100

Connection: to be welded

Max. pressure. : 10 bar

Operating temperature: -10°C to +100°C

Material: 316L stainless steel - NBR gaskets

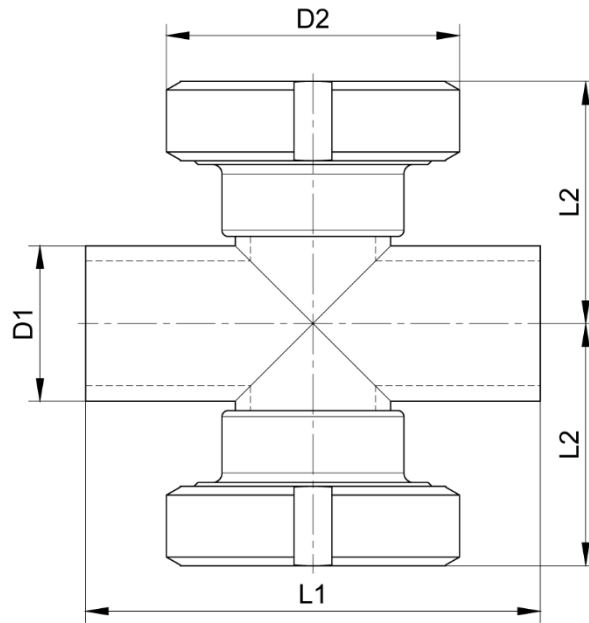
On request: EPDM or FKM gaskets



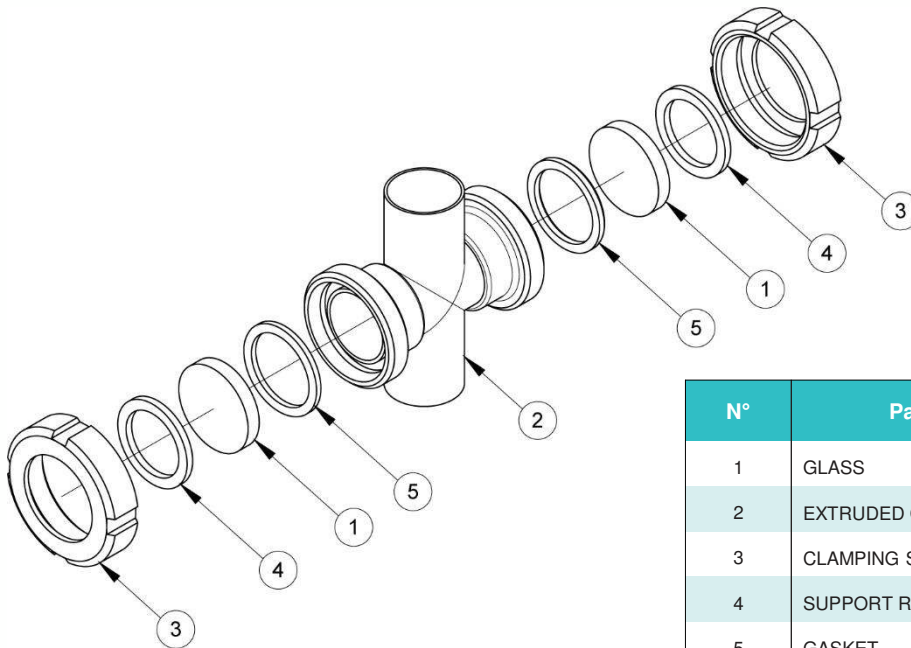
Béné Inox – 11 chemin de la Pierre Blanche – 69800 SAINT-PRIEST – S.A.S with 240 000 € share capital – SIREN N° 311 810 287
Tel. N°: +33 (0)4 78 90 48 22 – Fax N°: +33 (0)4 78 90 69 59 – www.bene-inox.com – bene@bene-inox.com

Technical information, illustrations and photographs are provided for information only, they are not contractual. Some may vary according to the tolerances accepted in the profession and the applicable standards. All instructions for use, disassembly and maintenance are recommendations only. These could also vary depending on product usage conditions, its installation environment and purchaser requirements – of which the purchaser alone is responsible for their definition.

62430-B VI124



DN (mm)	D1 (mm)	D2 (mm)	L1 (mm)	L2 (mm)	Threading DIN (nut + end)	Weight (kg)	Part number
25	29	63	100	55	52x1/6"	0.70	662430-25
32	35	70	110	62	58x1/6"	0.82	662430-32
40	41	78	120	65	65x1/6"	0.93	662430-40
50	53	92	140	73	78x1/6"	1.24	662430-50
65	70	112	160	90	95x1/6"	2.43	662430-65
80	85	127	180	103	110x1/4"	2.94	662430-80
100	104	148	200	126	130x1/4"	5.10	662430-100



N°	Part Name	Material
1	GLASS	PYREX®
2	EXTRUDED CROSS	AISI 316L
3	CLAMPING SCREW	AISI 304
4	SUPPORT RING	PTFE
5	GASKET	NBR/EPDM/FKM*

*NBR gasket as standard (EPDM or FKM on request)

Béné Inox – 11 chemin de la Pierre Blanche – 69800 SAINT-PRIEST – S.A.S with 240 000 € share capital – SIREN N° 311 810 287
Tel. N°: +33 (0)4 78 90 48 22 – Fax N°: +33 (0)4 78 90 69 59 – www.bene-inox.com – bene@bene-inox.com

Technical information, illustrations and photographs are provided for information only, they are not contractual. Some may vary according to the tolerances accepted in the profession and the applicable standards. All instructions for use, disassembly and maintenance are recommendations only. These could also vary depending on product usage conditions, its installation environment and purchaser requirements – of which the purchaser alone is responsible for their definition.

Assembly and maintenance instructions

Installation

You can install the double flat sight glass on a cross in any position. However, check that all fluids can flow through it freely.

Check that there is enough space to carry out maintenance operations where you are planning to install the double flat sight glass on a cross.

Double flat sight glass on a cross installation:

Welding must be carried out by qualified personnel.

You must disassemble the double flat sight glass on a cross to avoid damaging its gasket and the glass during welding.

Reassemble the double flat sight glass on a cross after welding.

Clean the installation and check that the equipment is clean and free from foreign bodies that could damage the double flat sight glass on a cross.

Pressure test the installation according to the relevant standards (e.g. EN 12266-1), but do not exceed the double flat sight glass on a cross's specifications.

Maintenance

The double flat sight glass on a cross does not require any specific maintenance if it is used in normal operating conditions.

You may need to change some of the double flat sight glass on a cross's parts due to unusual wear and tear, or if a fluid has damaged the sight glass and caused a leak or malfunction.

If this is the case see the "Assembly / Disassembly" section below.

Assembly / Disassembly

The maintenance and removal/installation of the double flat sight glass on a cross must be carried out by personnel who are qualified and trained for this type of intervention.



Warning: Before you work on the double flat sight glass on a cross, check that the installation has been stopped and that the piping is empty and is not pressurised.

Warning: If the double flat sight glass on a cross is used with fluids that have a temperature above 60°C then people could burn themselves if they touch it.

Warning: Beware of hazardous materials - follow the instructions provided by the suppliers.

Unscrew the clamping screws **3**.

Remove the support rings **4**, the flat glass pieces **1** and the gaskets **5**.

Clean and inspect all of the parts of the double flat sight glass on a cross. Replace any worn parts. You are strongly advised to replace any sealing parts that have been disassembled.

Follow the disassembly steps in reverse to reassemble the double flat sight glass on a cross.

Double flat sight glass accessories

Here is a list of all of our sight glass accessories, as well as a table that shows the corresponding accessory part numbers for each DN.

- Model **62427**: PTFE ring for a sight glass (part **4**)
- Model **62428**: Replacement Pyrex® glass (part **1**)
- Model **62394**: NBR half ring gasket (part **5**)
- Model **62397**: EPDM half ring gasket (part **5**)
- Model **62395**: FKM half ring gasket with BNIC certification (part **5**)

DN (mm)	Part number PTFE ring	Part number Pyrex® glass	Part number NBR gaskets	Part number EPDM gasket	Part number FKM gasket
25	962427-25	962428-25	962394-25	962397-25	962395-25
32	962427-32	962428-32	962394-32	962397-32	962395-32
40	962427-40	962428-40	962394-40	962397-40	962395-40
50	962427-50	962428-50	962394-50	962397-50	962395-50
65	962427-65	962428-65	962394-65	962397-65	962395-65
80	962427-80	962428-80	962394-80	962397-80	962395-80
100	962427-100	962428-100	962394-100	962397-100	962395-100

Standards and compliance

- This double flat sight glass on a cross complies with European Pressure Equipment Directive (PED) 2014/68/EU Article 4 paragraph 3 (formerly 97/23/EC Article 3 paragraph 3).
- This double flat sight glass on a cross complies with EC Directive 1935/2004.