

Cleaning nozzle



CE 1935/2004

Model 8081 Flat jet cleaning nozzle - Free rotation 316L stainless steel



Specifications

Connection: Pin joint 3/4", male 3/8", female 3/8"

Pressure: 2 to 3 bar

Max. Temperature: +130°C

Material: 316L stainless steel / PEEK
(for the parts that can come into contact with the transported fluid)

On request:

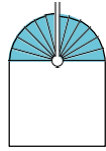
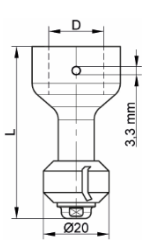
- NPT connection or connection for welding
- ATEX version
- Low flow rate version (15 l/min)



Béné Inox – 11 chemin de la Pierre Blanche – 69800 SAINT-PRIEST – S.A.S with 240 000 € share capital – SIREN N° 311 810 287
Tel. N°: +33 (0)4 78 90 48 22 – Fax N°: +33 (0)4 78 90 69 59 – www.bene-inox.com – bene@bene-inox.com

Technical information, illustrations and photographs are provided for information only, they are not contractual. Some may vary according to the tolerances accepted in the profession and the applicable standards. All instructions for use, disassembly and maintenance are recommendations only. These could also vary depending on product usage conditions, its installation environment and purchaser requirements – of which the purchaser alone is responsible for their definition.

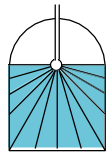
8081-B V1224



180° Spray - Top

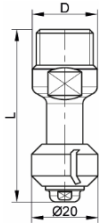
Connection:	D (mm)	L (mm)	Max. tank Ø (m)	Flow rate at 2 bar (l/min)	Weight (kg)	Part number
Pin 3/4"	19.2	62	1.7	21	0.04	680811-075G
Male 3/8" BSPP	-	52.5	1.7	21	0.04	680811-038M
Female 3/8" BSP	21.3	52.5	1.7	21	0.04	680811-038F

Pin

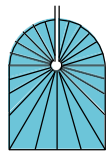


180° Spray - Bottom

Connection:	D (mm)	L (mm)	Max. tank Ø (m)	Flow rate at 2 bar (l/min)	Weight (kg)	Part number
Pin 3/4"	19.2	62	1.7	21	0.04	680812-075G
Male 3/8" BSPP	-	52.5	1.7	21	0.04	680812-038M
Female 3/8" BSP	21.3	52.5	1.7	21	0.04	680812-038F

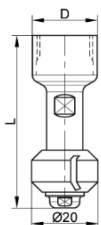


Male



360° Spray

Connection:	D (mm)	L (mm)	Max. tank Ø (m)	Flow rate at 2 bar (l/min)	Weight (kg)	Part number
Pin 3/4"	19.2	62	1.7	21	0.04	680813-075G
Male 3/8" BSPP	-	52.5	1.7	21	0.04	680813-038M
Female 3/8" BSP	21.3	52.5	1.7	21	0.04	680813-038F



Female

Washing class: 2

You can install the cleaning nozzle in any direction (e.g. horizontally, vertically, at 45° etc.)

This nozzle complies with the FDA and EC Directive 1935/2004 Material that can come into contact with the transported fluids: PEEK

Recommended pressure: 2 to 3 bar

Flow rate at 2 bar: 15 to 21 l/min Max.

allowed temperature: 130°C

Recommended filtration level: 0.2mm mesh

Pin connection dimensions comply with ASME BPE The 316L stainless steel pin is supplied with the nozzle

You can use a wide range of cleaning products with this nozzle (please contact us for more information)

On request:

- NPT connection or connection for welding
- ATEX version
- Low flow rate version (15 l/min)

Assembly and maintenance instructions

Installation

You can install the nozzle in any position.

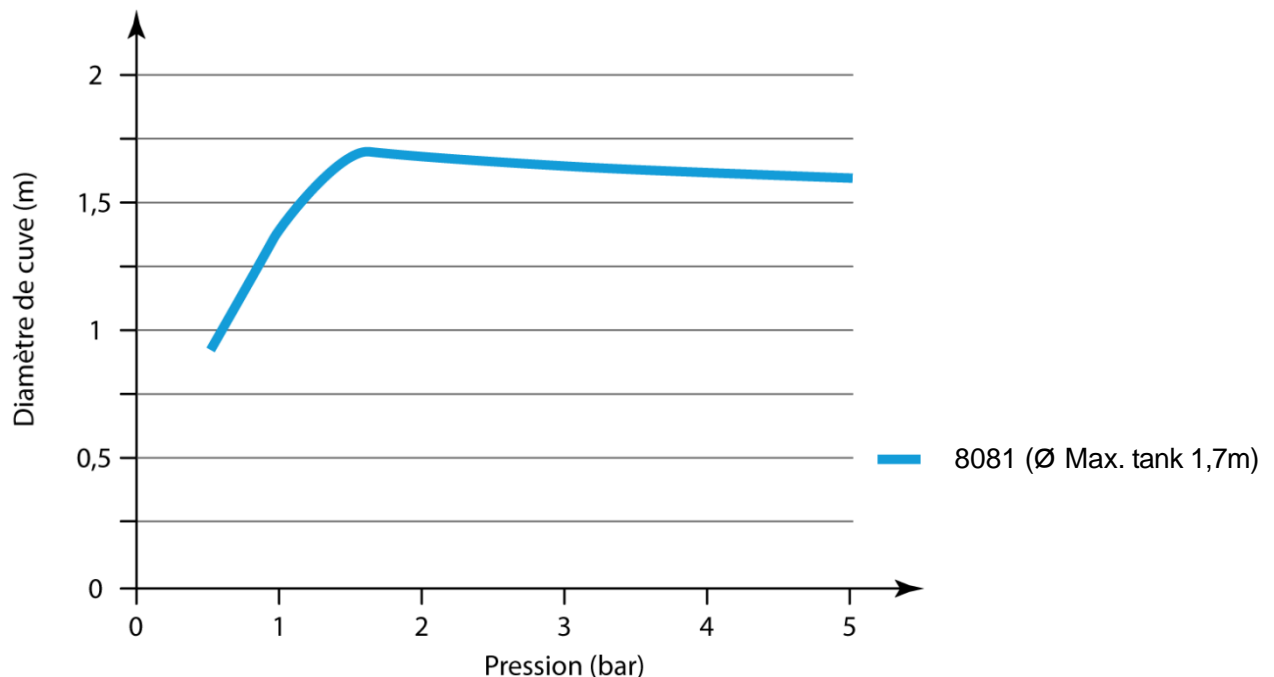
Check that there is enough space for the nozzle head to rotate freely and to carry out maintenance operations where you are planning to install the nozzle.

**You must install a filter element in the piping that takes fluid into the cleaning nozzle.
You must use a maximum mesh size of 0.3mm/50 mesh.**

Check that all piping is perfectly aligned and that the piping support structure is dimensioned so that the nozzle is not subject to any external stresses. The piping support structure must only support the pipes, not the nozzle.

Pressure test the installation according to the relevant standards (e.g. EN 12266-1), but do not exceed the nozzle's specifications.

Optimal cleaning according to tank diameter



Maintenance

The nozzle does not require any specific maintenance if it is used in normal operating conditions.